

SQUARE SWEATER

DIFFICULTY =

Yarn: [CASHSILK LIGHT](#) by **Laines du Nord**

2 balls (25 g each) in each of the following colors: 3002 (beige), M1 (taupe), 1 (cream), 3020 (green); 1 ball (25 g), col 3206 (orange)

Circular needles 7 mm and 8 mm tips with 60 cm and 80 cm cables.

Others: large-eye darning needle, stitch markers, scissors, measuring tape, stitch holders with stoppers.



POINTS USED

STITCHES USED

1x1 Rib in the round

Round 1 and foll rounds (RS): (k1, p1) rep to end of round.

Stockinette stitch: work in back-and-forth rows.

Row 1 (RS): knit all sts.

Row 2 (WS): purl all sts.

Rep rows 1 and 2 until desired length.

Joining in the round: slip the first st from the left needle to the right needle purl-wise, pass the last cast-on st over the slipped st and off the needle, pull the yarn tail to tighten the st, place a BOR marker to indicate the beginning of the round and move it up at the end of each following round.

ABBREVIATIONS

ABBREVIATIONS

RS = right side of the work

WS = wrong side of the work

SM = stitch marker

BOR = beginning of round marker

col = color(s)

r = row(s)

st = stitch(es)

k = knit

yo = yarn over

p = purl

decr = decrease(s)

rep = repeat

rep ** = repeat from * to *

bind off = bind off using the skp technique.

skp = slip 1, knit 1, pass slipped st over (slip 1 st knit-wise, k1, pass slipped st over).

k2tog = knit 2 stitches together (insert the right needle into the next 2 sts on the left needle and knit them together).

MEASURES

FINISHED MEASUREMENTS

Size shown in photo: S/M

Body width: 59 cm

Upper sleeve circumference: 30 cm

Sleeve length from underarm to cuff: 38 cm

Body length from underarm: 38 cm

Total length: 54 cm

Neckline width: 27 cm

PROCEDURE

DETAILED PATTERN INSTRUCTIONS

BODY (FRONT AND BACK IN THE ROUND)

Using 7 mm needle tips with an 80 cm cable and double-stranded orange yarn, cast on 120 sts. Place a BOR marker and join in the round, being careful not to twist the sts. Work 8 rounds in 1x1 rib. Continue in pattern stitch (see diagram), keeping in mind that although the body is

worked in the round, this section is worked back and forth in rows. At the beginning of each round, turn your work and cross the yarns at every color change.

Round 9 (RS): switch to 8 mm needle tips and work (p30 with double-stranded cream, p30 with double-stranded taupe) twice.

Round 10 (WS): turn and p all sts, maintaining the same color blocks as the previous round and cross yarns at each color change.

Round 11 (RS): turn and cross the yarn. Divide the sts into eight sections of 15 sts each using SM: 15 cream, 15 cream, 15 taupe, 15 taupe, 15 cream, 15 cream, 15 taupe, 15 taupe. Begin working the 15 x 15 cm squares as follows: * k2, yo, skp, k11 *, rep** across each 15-st square, between SM.

Round 12 and every even-numbered WS round up to round 30: turn and cross the yarn, p15 for each of the 8 squares maintaining color changes and moving SM as needed.

Round 13 (RS): turn and cross the yarn, * k3, yo, skp, k10, rep** rep from SM to SM 7 times more, crossing yarns and moving SM (this applies to all foll rounds as well).

Round 15 (RS): turn and cross the yarn, * k4, yo, skp, k9, rep** 7 more times.

Round 17 (RS): turn and cross the yarn, * k5, yo, skp, k8, rep** 7 more times.

Round 19 (RS): turn and cross the yarn, * k6, yo, skp, k7, rep** 7 more times.

Round 21 (RS): turn and cross the yarn, * k7, yo, skp, k6, rep** 7 more times.

Round 23 (RS): turn and cross the yarn, * k8, yo, skp, k5, rep** 7 more times.

Round 25 (RS): turn and cross the yarn, * k9, yo, skp, k4, rep** 7 more times.

Round 27 (RS): turn and cross the yarn, * k10, yo, skp, k3, rep** 7 more times.

Round 29 (RS): turn and cross the yarn, * k11, yo, skp, k2, rep** 7 more times.

Rounds 31 to 34: turn and cross the yarn, k all sts, crossing yarns at each color change and adjusting SM.

Round 35 (RS): turn and cross the yarn, k10, k2tog, yo, k3, rep** 7 more times, crossing yarns at color changes and moving SM (this applies to all foll rounds as well).

Round 36 and every even-numbered WS round up to round 54: turn, cross the yarn and p15 for each 7 st group, crossing yarns at color changes and moving SM.

Round 37 (RS): turn and cross the yarn, k9, k2tog, yo, k4, rep** 7 more times.

Round 39 (RS): turn and cross the yarn, k8, k2tog, yo, k5, rep** 7 more times.

Round 41 (RS): turn and cross the yarn, k7, k2tog, yo, k6, rep** 7 more times.

Round 43 (RS): turn and cross the yarn, k6, k2tog, yo, k7, rep** 7 more times.

Round 45 (RS): turn and cross the yarn, k5, k2tog, yo, k8, rep** 7 more times.

Replace cream with double-stranded green and beige with double-stranded taupe.

Round 47 (RS): turn and cross the yarn, k4, k2tog, yo, k9, rep** 7 more times.

Round 49 (RS): turn and cross the yarn, k3, k2tog, yo, k10, rep** 7 more times.

Round 51 (RS): turn and cross the yarn, k2, k2tog, yo, k11, rep** 7 more times.

Round 53 (RS): turn and cross the yarn, k1, k2tog, yo, k12, rep** 7 more times.

At this point, begin working the front and back separately, flat in rows. Work across the first 60 sts only and leave the remaining 60 sts on hold on a stitch holder.

UPPER FRONT

R 55 to 58: k60, maintaining the established color sequence and crossing yarns at color changes (this applies to all foll rows as well).

R 57 to 78: rep the stitch pattern from Rows 9 to 30 (worked back and forth).

R 79 to 81: knit.

R 82: bind off all sts.

UPPER BACK

Pick up the 60 sts left on hold and work as given for the upper front.

SLEEVES

Using 7 mm needle tips with a 60 cm cable and double-stranded orange yarn, cast on 36 sts. Place a BOR marker and join in the round. Work

8 rounds in 1x1 rib. Begin working in pattern stitch, keeping in mind that the sleeve is worked back and forth in rows, turning your work at the beginning of each round and crossing yarns at every color change.

Round 9 (RS): switch to 8 mm needle tips and k18 with double-stranded cream and k18 with double-stranded taupe.

Round 10 (WS): turn, cross the yarn and purl all sts, maintaining color placement and crossing yarns at color change (this applies to all foll rounds as well).

Round 11 (RS): turn and cross the yarn. With SM, divide the two 15-stitch sections (one in cream, one in taupe). K3, place a SM, * k2, yo, skp, k11, place a SM *, rep** once more and end with k3, crossing yarns at color change and moving SM (this applies to all foll rounds as well).

Round 12 and every even-numbered WS round up to round 30: turn, cross the yarn and purl all sts, maintaining color blocks, crossing yarns at color change and moving SM.

Round 13 (RS): turn and cross the yarn, k3, * k3, yo, skp, k10 *, rep** once more, k3.

Round 15 (RS): turn and cross the yarn, k3, * k4, yo, skp, k9 *, rip** once more, k3.

Round 17 (RS): turn and cross the yarn, k3, * k5, yo, skp, k8 *, rep** once more, k3.

Round 19 (RS): turn and cross the yarn, k3, * k6, yo, skp, k7 *, rep** once more, k3.

Round 21 (RS): turn and cross the yarn, k3, * k7, yo, skp, k6 *, rep** once more, k3.

Round 23 (RS): turn and cross the yarn, k3, * k8, yo, skp, k5 *, rep** once more, k3.

Round 25 (RS): turn and cross the yarn, k3, * k9, yo, skp, k4 *, rep** once more, k3.

Round 27 (RS): turn and cross the yarn, k3, * k10, yo, skp, k3 *, rep** once more, k3.

Round 29 (RS): turn and cross the yarn, k3, * k11, yo, skp, k2 *, rep** once more, k3.

Rounds 31 to 34: turn and cross the yarn, k all sts, crossing yarns at color change and moving SM.

Replace cream yarn with green and taupe with beige.

Round 35 (RS): turn and cross the yarn, k3, * k10, yo, k2tog, k3 *, rep** once more, k3,

crossing yarns at color change and moving SM (this applies to all foll rounds as well).

Round 36 and every even-numbered WS round up to round 54: turn, cross the yarn and purl all sts, maintaining the color sequence, crossing yarns at color change, and moving SM as needed.

Round 37 (RS): turn and cross the yarn, k3, * k9, yo, k2tog, k4 *, rep** once more, k3.

Round 39 (RS): turn and cross the yarn, k3, * k8, yo, k2tog, k5 *, rep** once more, k3.

Round 41 (RS): turn and cross the yarn, k3, * k7, yo, k2tog, k6 *, rep** once more, k3.

Round 43 (RS): turn and cross the yarn, k3, * k6, yo, k2tog, k7 *, rep** once more, k3.

Round 45 (RS): turn and cross the yarn, k3, * k5, yo, k2tog, k8 *, rep** once more, k3.

Round 47 (RS): turn and cross the yarn, k3, * k4, yo, k2tog, k9 *, rep** once more, k3.

Round 49 (RS): turn and cross the yarn, k3, * k3, yo, k2tog, k10 *, rep** once more, k3.

Round 51 (RS): turn and cross the yarn, k3, * k2, yo, k2tog, k11 *, rep** once more, end with k3.

Round 53 (RS): turn and cross the yarn, k3, * k1, yo, k2tog, k12 *, rep** once more, end with k3.

Rounds 55 to 58: turn and cross the yarn, k all sts, crossing yarns at color change and adjusting SM.

Round 59: bind off sts loosely.

Work the second sleeve as given for the first one.

FINISHING

With WS facing, sew the shoulder seams for 16 cm, leaving the center 27 cm open for the neckline. Sew the upper edge of each sleeve around the armhole, aligning the center of the sleeve cap with the shoulder seam. Weave in all ends. Wet and block.

INSTRUCTIONS

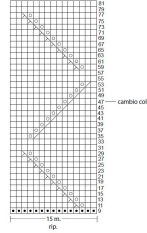
The garment is worked in the round from the bottom up to the armholes. The upper front and back are then worked separately in back-and-forth rows. Sleeves are worked in the round and joined at the armholes after sewing the shoulder seams.

When working in the round, place a BOR marker at the beginning of round 1 and slip it before starting each new round. Each colored section of the sweater is worked holding two strands of the same color together as one (double strand).

PHOTOGALLERY

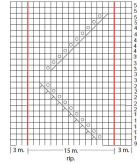


Schema 1: punto fantasia del corpo (davanti/dietro)



cambio colore

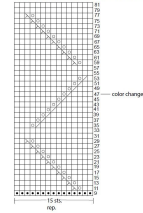
Schema 2: punto fantasia manica



Legenda

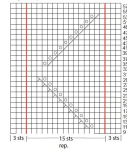
1. Knit
2. Purl
3. 2-stitch cable
4. 2-stitch cable
5. 2-stitch cable
6. 2-stitch cable
7. 2-stitch cable
8. 2-stitch cable
9. 2-stitch cable
10. 2-stitch cable
11. 2-stitch cable
12. 2-stitch cable
13. 2-stitch cable
14. 2-stitch cable
15. 2-stitch cable

Diagram 1: pattern stitch of the body (front and back)



color change

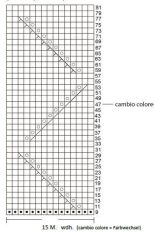
Diagram 2: pattern stitch sleeve



Key

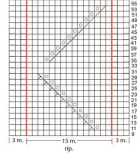
1. Knit
2. Purl
3. 2-stitch cable
4. 2-stitch cable
5. 2-stitch cable
6. 2-stitch cable
7. 2-stitch cable
8. 2-stitch cable
9. 2-stitch cable
10. 2-stitch cable
11. 2-stitch cable
12. 2-stitch cable
13. 2-stitch cable
14. 2-stitch cable
15. 2-stitch cable

Schema 1: fantasia manica - Körper (vordere/Rückseite)



cambio colore

Schema 2: fantasia manica - Ärmel



Legenda

1. Knit
2. Purl
3. 2-stitch cable
4. 2-stitch cable
5. 2-stitch cable
6. 2-stitch cable
7. 2-stitch cable
8. 2-stitch cable
9. 2-stitch cable
10. 2-stitch cable
11. 2-stitch cable
12. 2-stitch cable
13. 2-stitch cable
14. 2-stitch cable
15. 2-stitch cable